

How do I setup and use SSH?

20 Administrator Sat, Jun 1, 2019 [Internet Based Business](#), [Web Development](#) 0 6365

SSH is a powerful service which allows you to log into the server remotely to perform specific tasks. **For security purposes, we do not enable SSH access by default. You must contact our support department or open a support ticket to enable this feature.** Common tasks include checking for new mail (via pine) or sending outgoing mail (via sendmail). Other common tasks include modifying file permissions, using compression utilities (tar and zip), and using editors (such as Pico or Vi) to modify files on the server side.

With **SSH access** comes a shell. The shell you use simply acts as a layer of communication between the command-line and the Operating System. The command line passes arguments directly to the shell, where they undergo several tests. If successful, the command is passed on to the operating system.

To connect using SSH, just connect to your-domain.com and the operation is performed.

SSH is a service that runs on port 22 on our web servers. Using a SSH client (we recommend SecureCRT), you will get the following set of messages when you login:

Red Hat Linux release x.xx

Kernel x.x.x on an xxxx

login: username

Password: *****

If your login was successful you will see:

Last login: Day Mon XX XX:XX:XX from some.hostname.com

In case you have not figured it out yet, your system login and password are required to connect to your account via SSH. The login and password is identical to that which is used to access your web-based control panel.

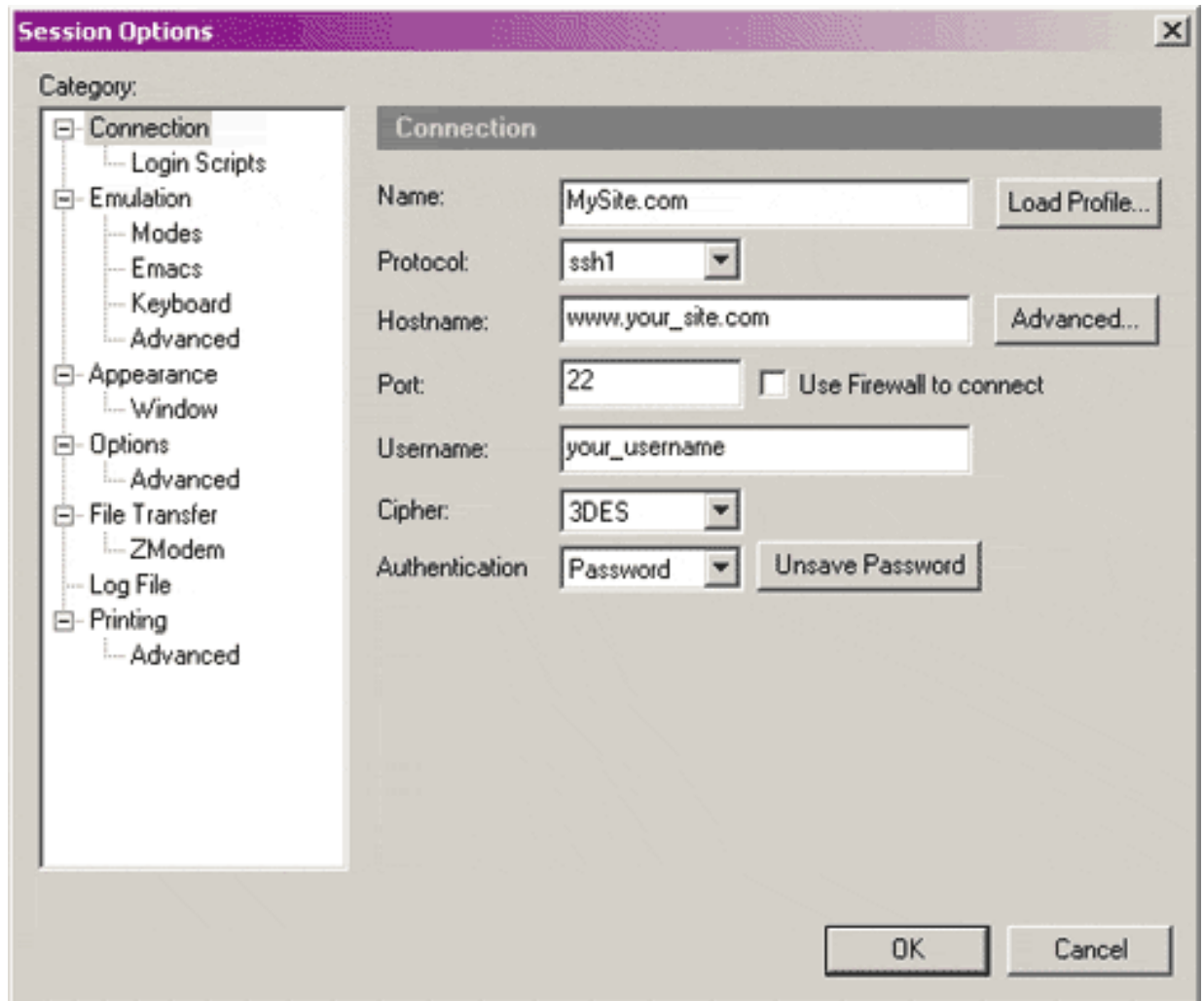
What SSH client do you recommend?

- Shareware: We recommend the use of SecureCRT from VanDyke Technologies, if you are using Windows 95/98/2000/NT. You can download it [here](#).
- Freeware: If you prefer a free SSH/telnet client, we recommend PuTTY. You can download it by clicking on the attachment located at the bottom of this page.

How do I log into my account via SSH with this software?

SecureCRT setup: Once you have downloaded and installed CRT, you can now log into your account via SSH. First, when you open your application, follow these steps:

1. Pull down the "File" menu.
2. Select "Quick Connect and you should see this window.



3. Fill out the field with the information needed about your account.
4. Hit "OK" to connect.
5. When connected you will be prompted to enter your password.
6. Done!

PuTTY setup:

Server: Yourdomain.com OR Your-IP-address

Login: your-username

Pass: your-password

Port: 22

Protocol: If SSH1 does not work, try SSH2

What other SSH clients can I use on my account?

You may use any SSH client you wish. Use of SSH is certainly not restricted to our recommended software. There are dozens of high quality SSH clients to choose from, all of which have their benefits and downsides.

Where can I obtain other SSH client applications?

Tucows.com has a very large selection with good reviews of SSH clients.

Shareware.com has a large number of free SSH clients.

Download.com also has a good variety of SSH clients.

Online URL: <https://www.articlediary.com/article/how-do-i-setup-and-use-ssh-20.html>